

**Income Limits for Housing Choice Voucher Rental Assistance Apartments must be at or below: (must provide verification of disability)**

**1 person = \$14,600 per yr.**

**2 person = \$16,650 per yr.**

**3 person = \$20,160 per yr.**

**4 person = \$24,300 per yr.**

**5 person = \$28,440 per yr.**

**6 person = \$32,580 per yr.**

Rent = 30% of income

+ tenants pay gas & electric utilities.



**Income Limits for Tax Credit Apartments must be at or below: (no disability verification required)**

**1 person = \$23,355 per yr.**

**2 person = \$26,685 per yr.**

**3 person = \$30,015 per yr.**

**4 person = \$33,345 per yr.**

**5 person = \$36,045 per yr.**

**6 person = \$38,700 per yr.**

Rent for Tax Credit Apartments:

**1 bedroom = \$498.00/mo.**

**2 bedroom = \$582.00/mo.**

**3 bedroom = \$655.00/mo. (Holland only)**

+ tenants pay gas & electric utilities

## HHI Management Company

Licensed Real Estate Broker

### CONTACT INFORMATION

**Mailing address:**

400 136th Avenue

Building 200, Suite 205

Holland, MI 49424

Visit us in person at Suite 207

Walk-In Hours: Mon-Fri 1:00pm-5:00pm

Phone: 616-395-9311

Phone: 269-218-0930

TTY: 711 or 800-649-3777

Fax: 616-395-9315

Website: [www.heritagehomesinc.org](http://www.heritagehomesinc.org)

Email [HHI@heritagehomesinc.org](mailto:HHI@heritagehomesinc.org)

**Kaitlin Napier**

Administrative & Leasing Assistant—x113

**Lindsey Ajega**

Leasing & Resident Relations Manager—x103

**Erica Tijerina**

Compliance Specialist—x109

**Stacy Pacanowski**

Director of Housing Development & Management—x110



Brochure updated 11/2017

## Ottawa County Supportive Housing Apartments

### Floor Plans & Income Limits



Beeline Apartments, Holland MI



North Elm Apartments, Zeeland MI

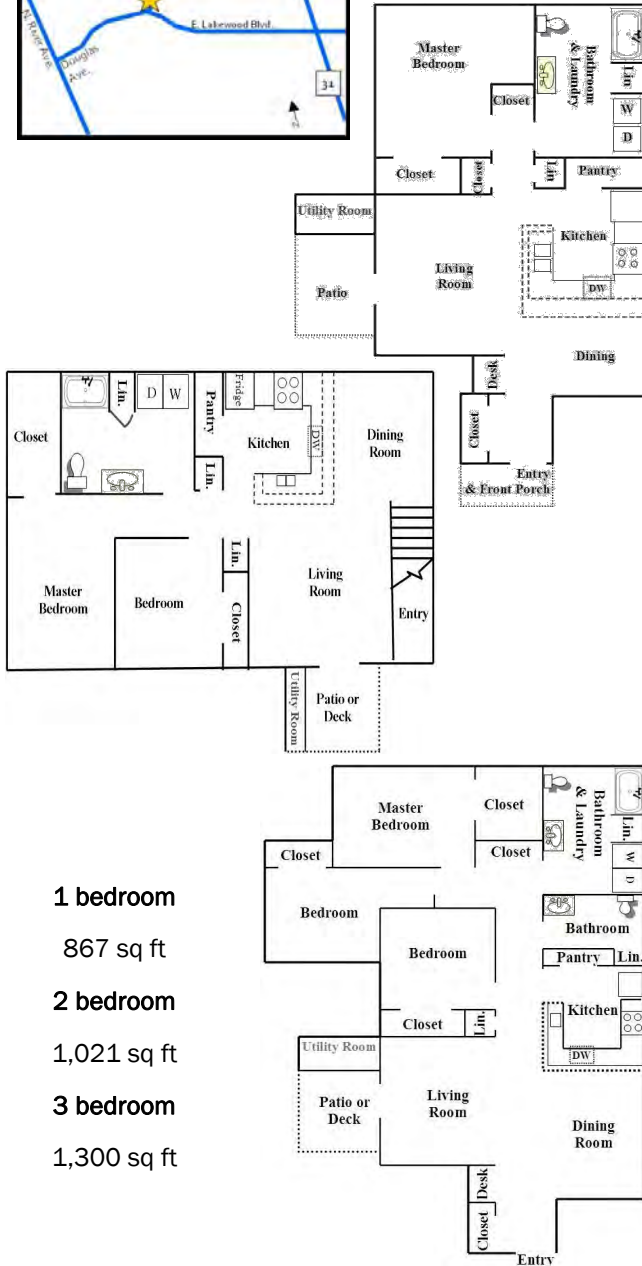


Despelder Place Apartments, Grand Haven MI



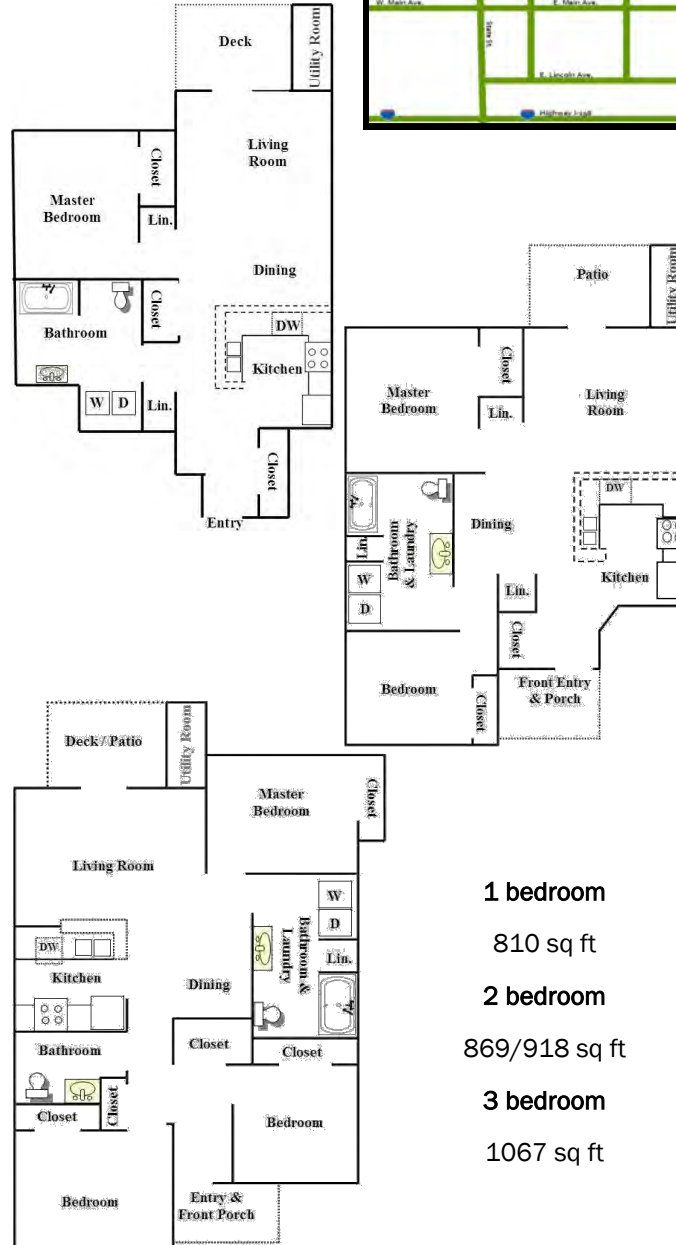
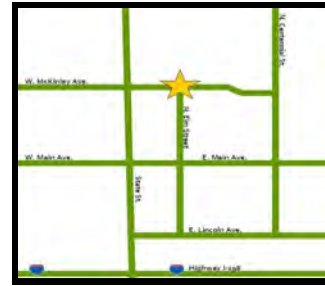
306 - 310 - 314 Beeline Road

Holland, MI 49424



225 N. Elm Street

Zeeland, MI 49464



309 N. Despelder Street

Grand Haven, MI 49417

